

BROADENING OUR LANDSCAPE VISION: **ECOLOGY, CULTURE, AND ART**

A VIRTUAL EDUCATION SERIES FOR PROFESSIONALS

This series explores an eclectic array of landscape approaches ranging from ecology-based design, to culturally reflective landscapes, to the art of making "wild" landscapes legible. Presenters will include Roy Diblik, Wambui Ippolito, W. Gary Smith, Eric Groft, and Donald J. Leopold. Join Larry Weaner for a series of "Prairie-side Chat" interviews, where influential practitioners including Thomas Woltz, Tom Wessels, Leslie Sauer and others reveal the thought processes and motivations that have guided their work. In addition, Larry Weaner will teach a five-part intensive course on native design, planting, and management.

A national series oriented towards landscape architects, designers, restoration ecologists, and horticulturists.

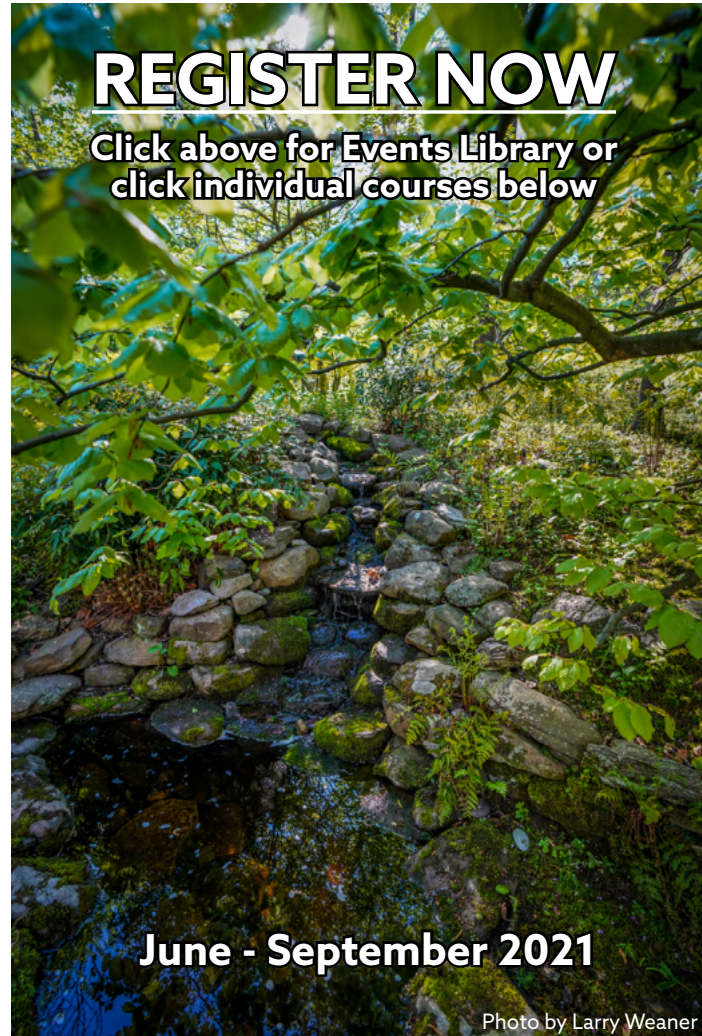
Cosponsored by:

WILD ONES - NATIVE PLANTS, NATURAL LANDSCAPES
AMERICAN HORTICULTURAL SOCIETY
LADY BIRD JOHNSON WILDFLOWER CENTER

New Directions in the American Landscape

NDAL has presented programs throughout the U.S. focusing on the theory and practical application of an expansive vision of "Ecology-Based Design." Programs draw from a variety of disciplines including landscape design, the ecological sciences, anthropology, art, history, and agriculture.

In 2016, NDAL received the first Regional Impact Award from the Native Plant Trust (formerly the New England Wildflower Society).



REGISTER NOW

Click above for Events Library or
click individual courses below

June - September 2021

Photo by Larry Weaner

Live sessions will be recorded (unless otherwise specified) and viewable to registrants for 3 months. Registration closes after that 3 month period.

CEUs:

APLD, ASLA/LACES, & NOFA

Questions? Email info@ndal.org

**You have made a great contribution to
the field through your conferences.**

**- LESLIE SAUER
FOUNDING PRINCIPAL (RETIRED)
ANDROPOGON ASSOCIATES
PHILADELPHIA, PA**

Ecology-Based Landscape Design

Larry Weaner, FAPLD & Ian Caton



Photo by Larry Weaner

Intensive 5-Session Course

Applicable to Eastern & Midwestern U.S.

5-Day Bundle: \$340 | Individual Days 1-4: \$95 each | Individual Day 5: \$28

DAY 1* FOUNDATIONS OF ECOLOGY-BASED DESIGN

Larry Weaner

***Recommended prerequisite for Days 2, 3, 4, & 5**

Our opening presentation will examine the vegetative patterns and ecological processes of spontaneous plant communities. Each characteristic will be followed by an example of its direct incorporation into a landscape project. Processes described will include disturbance, competition, vegetative pattern, ecological succession, and ecological stability. Ecological plant traits will include habitat fidelity, growth pattern, spatial and temporal niche, and proliferation strategies.

Tuesday, July 6th | 1 - 4:30 PM EDT

DAY 2 THE OPEN LANDSCAPE: MEADOWS, OLD FIELDS, & SHRUBLANDS

Larry Weaner

While meadows are in high demand, effective protocols for designing and implementing them are in short supply. Here we will delve into the nitty gritty of meadow design: site analysis, species selection, seed mix formulation, live plant inclusion, planting and management. The inclusion of shrub thickets and drifts will also be covered, including the arrangement of clonal vs. clump forming species, and the use of shrublands as ecological and visual "connective tissue" between meadow and woods.

Tuesday, July 13th | 1 - 4:30 PM EDT

Ecology-Based Landscape Design *continued*

Larry Weaner, FAPLD & Ian Caton

DAY 3

THE CANOPIED LANDSCAPE: WOODLANDS, EDGES, AND HEDGEROWS

Larry Weaner

Establishing woodlands is as much the design of a process as a planting plan. Guided succession can foster the orderly transformation from an open field to a multi-tiered forest through planting, managed natural recruitment, or a combination of the two. Under existing canopy, where few herbaceous species can be established through direct seeding, we will discuss the planting of small "seed source colonies," and the management strategies that can encourage their proliferation into the larger landscape. Field techniques that are unique to woodlands such as selective height mowing, sunlight manipulation, assisted seed dispersal, and others will also be described in detail.

Tuesday, July 20th | 1 - 4:30 PM EDT

DAY 4

THE PLANTS: MEADOWS, SHRUBLANDS, & WOODLANDS

Ian Caton & Larry Weaner

In this session, native plant authority Ian Caton will examine some of the native species that exemplify the ecological characteristics described in the previous sessions, and illustrate how this information can inform the process of selecting and arranging individual plants. He will also present a group of "workhorse species" that combine reliability and weed suppression with attractive aesthetic character. Larry and Ian will then engage attendees in a conversation that explores their shared experiences and answer attendee questions. Larry will conclude by describing the heightened experience that an interactive relationship between people and plants can engender for both designers and their clients.

Tuesday, July 27th | 1 - 4:30 PM EDT

DAY 5

OFFICE HOURS

Larry Weaner & Ian Caton

This "conversation"-style session will be entirely devoted to Q&A and participant comments. The three week gap between this and the previous session will allow participants to apply course content in the real-world, and return to discuss their experiences with presenters and fellow participants.

Wednesday, August 18th | 1 - 2:30 PM EDT

Attendees will receive login-protected access to an extensive course manual including plant lists, an ecology-based plant characteristics chart, equipment recommendations, wildlife habitat enhancement strategies, diagrams for planting and maintenance procedures, and more.

Individual Sessions

3 hour sessions | \$88 each

ART, MUSIC, AND EPHEMERALITY IN THE DESIGNED LANDSCAPE

W. Gary Smith, FASLA & Larry Weaner, FAPLD

While Gary Smith has been a major player in the Ecological Design Movement for much of its existence, he now devotes his primary design energies to ephemeral and improvisational environmental art. He will discuss this work, how it has influenced his design practice, and how its immediacy can reflect natural processes of change in the landscape. Landscape designer and music composer Larry Weaner will then discuss the commonalities between garden design and music composition, two arts that are experienced sequentially over time. He will also illustrate how improvisation and response to spontaneous events - techniques common to contemporary classical music and jazz - can have particular relevance in "wild" garden settings.

Thursday, July 22nd | 1 - 4:30 PM EDT

Interdisciplinary Roundtable

NATURE EMBODIED IN THE CITY LANDSCAPE: HISTORY, THEORY, AND PRACTICE

Dr. Steven Moga, Diana Fernandez, ASLA, PLA, & Mickey Fearn

The efforts of landscape architects, historians, academics, conservationists, and public servants frequently overlap, and when projects arise, they should be in the same room. Urbanist and city planning historian Steven Moga will explore how planning and economic segregation in American cities often relegated immigrants and minorities to lowland areas plagued by flooding and unhealthy living conditions. Landscape architect Diana Fernandez will discuss the connection between landscape ecology and landscape heterogeneity as an opportunity to embrace the concept of difference to build resilient landscapes. Public servant, parks, recreation, and conservation professional Mickey Fearn will share his expertise in innovative community engagement strategies to foster diversity, equity & inclusion. Their short presentations will be followed by an extensive, candid roundtable discussion about the many issues relating to equity and inclusion that landscape architects are working to overcome.

Monday, July 26th | 1 - 4:30 PM EDT

From amazing content, to simple/attractive communications,
to your spirit of value-in-education, NDAL is just a TOP NOTCH operation.

- JEFF MILLS
EXECUTIVE DIRECTOR
CT CHAPTER OF AMERICAN SOCIETY
OF LANDSCAPE ARCHITECTS

Individual Sessions *continued*

3 hour sessions | \$88 each

CONNECTING CLIENTS TO LANDSCAPE THROUGH PHOTOGRAPHY

Rob Cardillo & Mark Weaner

Like people, plants and gardens express changing moods and personalities. Visit them at the right time and they'll be filled with romance, whimsy, or mystery. Visit on the wrong day and you might face a boring afternoon that taxes your creative soul. Master garden photographer Rob Cardillo will illustrate how we can best predict and find these fleeting moments, such as finding the inner beauty in a wet and gloomy meadow. Mark Weaner is an iconoclastic photographer with a unique vision and set of techniques. He will continue the session by illustrating how images can go beyond literal depiction and connect clients to their feelings about a place, bringing their attention to aspects that had been previously unnoticed or even helping them see the "familiar" in a new light. Finally, an informal session will allow our presenters to "compare notes" and participate in a three-way conversation with session participants.

Please note: Rob's presentation & the session's Q&A will be **live only, not recorded**.

Thursday, July 29th | 1 - 4:30 PM EDT



PERENNIALS AS GROUND LAYER

Eric Groft, FASLA, Roy Diblik, & Larry Weaner, FAPLD

Herbaceous perennials in America had long been relegated to the "perennial border"...that is, until Oehme Van Sweden and Associates arrived in 1975 and prairie-inspired perennial compositions became an integral aspect of many landscapes. Furthering this natural connection, designers began looking at native plant communities for guidance on selecting and placing herbaceous plants together in healthy "community-like" relationships. But in nature, plant compositions rarely remain static; thus planning for and managing compositional change became part of the mix. Our presenters were all influential players in these dramatic developments. In this session attendees will learn about their individual approaches, and engage in an ad hoc session where our presenters "compare notes" and field participant questions.

Tuesday, August 3rd | 1:00 - 4:30 PM EDT

Individual Sessions *continued*

3 hour sessions | \$88 each

NOVEL ECOSYSTEMS AND THE URBAN LANDSCAPE

Dr. Peter Del Tredici & Dr. James Hitchmough

The combination of the chronic environmental stress induced by climate change, the physical disturbances of urbanization, and the competition presented by globalization (invasive species) interact to create urban novel ecosystems that have no analog with those found in nature. Peter Del Tredici will discuss the remarkable ability of spontaneous urban vegetation to rebuild ecological functionality from the ground up, thereby making cities more livable for all their inhabitants. James Hitchmough will discuss intentionally-designed novel plant communities, where the general characteristics of historic plant community associations are scientifically applied to newly-created plant assemblages with varying nativity. The session will conclude with a spontaneous conversation between our presenters and attendees on how these approaches can enhance the urban landscape.

Wednesday, August 4th | 11 AM - 2:30 PM EDT

Interdisciplinary Roundtable

LAWNS, LEAVES, & LAWS: PRACTICAL PATHWAYS TOWARD LAWN ALTERNATIVES & ECOLOGICAL TURF CULTIVATION

Sarah Schindler, Rod Simmons, Nancy Lawson, & Chip Osborne

Many now recognize that the dominance of manicured lawns in many of our landscapes is environmentally harmful. That said, many homeowner's associations and municipalities are regulating front yard plant heights and store shelves are still stocked to the brim with pesticide products composed of harmful chemicals. An environmental law professor, two ecologists, and an organic turf expert will share practical ways to overcome these hurdles and create more ecologically beneficial landscapes. Their short presentations will be followed by an extensive roundtable discussion and audience Q&A enriched by their interdisciplinary perspectives.

Thursday, August 5th | 1:00 - 4:30 PM EDT



Individual Sessions *continued*

3 hour sessions | \$88 each

WOODLANDS: THE PLANTS AND PROCESSES

Bill Cullina & Carol Gracie

We cannot restore what we do not understand. While it is important to see plant species and even cultivars as individuals with differing needs and attributes, it is also important to understand their role in natural communities. First, Bill Cullina will review some emerging, fascinating, and revealing research on forest ecology, plant phytogeography, pollination ecology and symbiosis. Carol Gracie will discuss pollination, seed dispersal, and other means of proliferation; as well as other faunal associations. Finally, presenters will have an informal conversation and field questions on this macro-micro connection, and the real-world ramifications for garden designers.

Wednesday, August 11th | 1 - 4:30 PM EDT

STRESS-ADAPTED NATIVE PLANT COMMUNITIES AS TEMPLATES FOR HIGHLY DISTURBED LANDSCAPE SITES

Dr. Donald J. Leopold & Tim Toland, RLA, LEED AP

Native plant communities can be found on remarkably difficult sites, e.g., highly alkaline, saline, acidic, droughty, and flooded. In the Northeast U.S. these communities include alvars, dunes, acidic pine barrens, inland salt marshes, marl fens, and other wetlands. A subset of these natural assemblages can be used to create sustainable landscapes on human-made sites that have similarly hostile conditions. Through a pair of presentations ending with an informal conversation and Q&A session, our presenters will discuss the ecology of these assemblages and how they can be adapted to a wide variety of "difficult site" projects from residential to urban to highly degraded industrial landscapes.

Thursday, August 19th | 1:00 - 4:30 PM EDT

By far the most valuable session I have participated in among ALL offerings from across ALL gardening/farming/ecology organizations that I'm involved with.

-Sheila B., *Navigating Race & Inclusivity in Community Gardens* Attendee, Winter 2021 Virtual Series

Individual Sessions *continued*

3 hour sessions | \$88 each

NEIGHBORHOOD-BASED LANDSCAPES: INCLUSIVITY AND ECONOMIC RECOVERY IN DETROIT

Alexa Bush, PLA & Ujijji Davis Williams, PLA, ASLA

Vacant and public land often exhibits a destabilizing force on neighborhoods. But it also presents a great opportunity for communities to activate green space as platforms for their own aspirations. This session will explore active community design projects in Detroit that put residents in the driver seat. This type of approach, one that fosters community self-determination and influence over the built environment, can result in landscapes that support more cohesive communities. Our presenters will also link these projects to emerging definitions behind landscape reconciliation and the expansive roles of landscape architects in achieving reparative justice. Finally, presenters and attendees will have the opportunity to informally discuss the advantages and challenges of community involvement in landscape design, inclusivity, and other related topics.

Tuesday, August 31st | 1:00 - 4:30 PM EDT

ECOLOGISTS AND LANDSCAPE ARCHITECTS: WORKING RELATIONSHIPS

Barbara Wilks, FASLA, FAIA & Steven N. Handel, PhD, Fellow of the Ecological Society of America

Public landscapes increasingly attempt to join ecological improvements to the practical, aesthetic, and cultural aspects of their landscape enhancements. Our two speakers, each acclaimed in their respective fields of Landscape Architecture and Restoration Ecology, have collaborated on numerous projects over the past ten years. They will review their collaborative design process through a series of public park projects where ecological structure and function was a significant part of the design vocabulary, followed by an interactive discussion on the nuts and bolts of their Eco-Design collaboration.

Wednesday, September 1st | 1:00 - 4:30 PM EDT

//

What I learned will definitely make a difference in my work and how I move forward with my projects. Thank you!

**- ROBIN M., 2020 SUMMER
SERIES ATTENDEE**



Photo by Larry Weaner Landscape Associates

Individual Sessions

1.5 hour sessions | \$48 each

USING NATIVE PLANTS FOR FIRE-RESISTANT LANDSCAPES

Greg Rubin

Far from being the fire-bombs often depicted in the media, a native landscape can be an ecologically responsible approach to creating effective defensible space. Not a single of Greg's client's homes were lost in nearly 3 dozen major fire events. Consequently, the US Navy selected his company to conduct a 5-year research study into the effectiveness of California native landscapes as enhanced defensible space. Greg's co-Principal Investigator was Dr. Jon Keeley, one of the world's foremost fire ecologists. He will cover the startling results, as well as general principles for successful native landscape design, installation, and maintenance in fire prone areas.

Tuesday, June 29th | 1:00 - 2:30 PM EDT

DESIGNING ECOLOGICAL SPACES FOR CHILDREN: CASE STUDIES FROM THE US & DENMARK

Willa Caughey

Evidence abounds that children benefit from time spent in nature-based environments, yet concerns over safety and maintenance often result in standardized, single-purpose spaces. In this presentation, Willa Caughey will draw on research and case studies in the U.S. and Denmark to explore how schools, parks, playgrounds, and the other spaces children occupy can support children's development, cultivate independence and resilience, complement curriculum-based learning goals, increase time spent outside, and fulfill vital ecological functions by introducing more nature to the children's realm.

Friday, July 9th | 1:00 - 2:30 PM EDT

PEOPLE & PLANTS OF THE WORLD: LANDSCAPE COMMONALITIES

Wambui Ippolito

Viewing landscapes and plants through the lenses of different cultures will help designers create panoramas that are not only aesthetically pleasing, but are spaces where Nature is no longer reorganized and alien. Working with Nature to create landscapes in which both people and plants are considered is the new frontier for landscape designers.

Tuesday, August 24th | 1:00 - 2:30 PM EDT

"Prairie-side" Chats

1.5 hours each | \$45 each

Frequently, the side tangents that lecturers don't have time to explore can be as enlightening as the core material that they do cover. In this series Landscape Designer Larry Weaner will allow some of today's most influential landscape practitioners to more fully explore those tangents. Through a planned interview, off the cuff conversation, and questions from participants, the session will explore some of the underlying influences, encounters, and revelations that have shaped their work.

CHARLES ALLEN, MALCOLM VIDRINE, & MARC PASTOREK: PRAIRIE LOST AND FOUND (INTERVIEWED BY LARRY WEANER)

Two-and-a-half million acres of southwestern Louisiana's Cajun Prairie has been displaced by agriculture, development, and petroleum extraction. The prairie's loss has been so complete for so long that most residents were not aware that it ever existed. That has changed, however, due in large part to the guests on this panel. During this session we will explore how discovering the last prairie remnants on old railroad beds led to a realization of the interdependence of prairie and fire, which resulted in the first successful restorations in the region. Their discovery of the "lost" Cajun Prairie, and their investigations into the "unseen" drivers that determined the fate of that prairie, can provide inspiration to practitioners throughout the United States.

Wednesday, July 7th | 1 - 2:30 PM EDT



Marc Pastorek collects seeds for a Cajun Prairie restoration

THOMAS WOLTZ: CRAFT, CONSERVATION, & CATTLE (INTERVIEWED BY LARRY WEANER)

Given his education in the fields of Architecture, Landscape Architecture, Fine Arts, and Architectural History, it is not surprising that Thomas Woltz takes a broad approach in his design practice. Throw in a love of "working lands" and "wild places" derived from growing up on a North Carolina farm and you have an individual who defines Landscape Architecture much more expansively than most. This informal interview and conversation will explore the many paths that have led to, and intersect at, Thomas's practice at Nelson Byrd Woltz, a firm that received 11 ASLA awards in 2020 alone.

Wednesday, July 14th | 1 - 2:30 PM EDT

I almost forgot I was not in the same room with them, eavesdropping on their chat.

- DONNA E., LARRY WEANER CHAT WITH DOUG TALLAMY, 2020 SUMMER SERIES ATTENDEE

"Prairie-side" Chats *continued*

1.5 hours each | \$45 each

LESLIE SAUER: BEEN THERE, DONE THAT, HERE'S WHAT I'VE LEARNED (INTERVIEWED BY LARRY WEANER)

Our conversation will cover the revolutionary professional road that Leslie has traveled from her studies at the University of Pennsylvania under Ian McHarg, through her 25 years as founding partner of the groundbreaking Landscape Architecture firm Andropogon and Associates, to her present day activism on the underappreciated importance of Proforestation in ameliorating climate change. Leslie Sauer tends to speak her mind, and the informal format of this session will afford her the opportunity to candidly reflect on a storied career that has spanned the entire trajectory of the modern landscape ecology movement.

Wednesday, July 21st, | 1:00 - 2:30 PM EDT

TOM WESSELS: INTERPRETING THE INTERTWINED HISTORY OF PEOPLE & NATURE (INTERVIEWED BY LARRY WEANER)

Whether you are standing in a second generation forest or atop an ancient granite dome, clues that reveal the concurrent forces of people and nature over time are very likely evident - if you learn to see them. And learning to see them may be more relevant than you think. Minute observations on the shape of a single tree stump or the configuration of an historic farm wall can alter your understanding of a landscape site. Our conversation will explore Tom Wessels's fascinating career investigating these forces, teaching people how to interpret them, and illustrating the use of this information to make more informed landscape decisions.

Wednesday, July 28th | 1:00 - 2:30 PM EDT



PRESENTER BIOGRAPHIES



Dr. Charles Allen is a retired Professor of Biology from the University of Louisiana at Monroe and retired Senior Research Associate with Colorado State University stationed at Fort Polk, Louisiana. He is a founding member of the Louisiana Native Plant Society and the Cajun Prairie Habitat Preservation Society. Charles has helped to restore Cajun Prairie and presented several papers about this prairie at several North American Prairie Conferences.

Alexa Bush, PLA, is passionate about creating equitable and resilient cities. She is the Urban Design Director - East Region in the City of Detroit Planning Department. She manages a team responsible for planning and implementing neighborhood development and landscape infrastructure projects on Detroit's east side. Alexa received her bachelor's degree in Visual and Environmental Studies from Harvard University and her master's in Landscape Architecture from the University of Virginia. She serves on the Board of Directors for the Landscape Architecture Foundation.



Photo by Sarah Amaden

Rob Cardillo has been photographing gardens, plants and the people who love them for nearly thirty years. He's been credited as the primary photographer in over twenty-five books published by Timber Press including: *The Art of Gardening at Chanticleer* (2015, by R.W. Thomas), and *Layered Garden* (2012, by David Culp); and is published in *Country Gardens*, *Gardens Illustrated* and *The New York Times*. Along with his Blue Root Media partners, Rob provides editorial content for an award-winning regional gardening magazine, *GROW*, published by the Pennsylvania Horticultural Society. Winner of numerous photography awards, Rob was inducted into the GardenComm Hall of Fame in 2015.



Photo by Larry Weaner

//
I've followed you for many years. Happy and grateful for moving the needle and sharing so much.

- 2019 WORKSHOP ATTENDEE

PRESENTER BIOGRAPHIES *continued*

Ian Caton worked for Larry Weaner Landscape Associates from 2001 to 2013, and now serves as a project consultant for the firm. He is also the founding principal of Wood Thrush Native Nursery in Floyd, VA. Ian has designed and installed landscapes for a wide range of residential, commercial, and public settings. Prior speaking engagements include the Irvine Native Plant Symposium and events at the New York Botanical Garden and Bowman's Hill Wildflower Preserve. Ian has a B.S. in Ornamental Horticulture and Environmental Design from Delaware Valley College.



Willa Caughey is an associate at Bay Tree Design in Berkeley, CA, with master's degrees in Landscape Architecture and Ecological Design. A native of the Bay Area, Willa spent several years living in Copenhagen, Denmark, primarily designing spaces for children. At Bay Tree Design, her portfolio includes schools, senior housing, and residential projects. Willa is passionate about creating healthy, engaging spaces that promote connection to nature for all users, particularly children.

William Cullina has recently become the F. Otto Haas Executive Director at the Morris Arboretum of the University of Pennsylvania after eleven years at the Coastal Maine Botanical Gardens in Boothbay, Maine. William holds degrees in plant science and psychology and has been working in public horticulture for 25 years. Prior to that, he was involved in horticultural and forestry research, and commercial nursery production. His books include, *Wildflowers, Native Trees, Shrubs, and Vines* (2002); *Understanding Orchids* (2004); *Native Ferns, Mosses and Grasses* (2008); and *Understanding Perennials* (2009).



*Darrel Morrison and Nancy Aten
designing to music at 2014
NDAL Symposium*



PRESENTER BIOGRAPHIES *continued*



Photo by Paul Meyer, Chanticleer

Dr. Peter Del Tredici is a botanist specializing in the growth and development of trees. He retired from the Arnold Arboretum of Harvard University in 2014 after 35 years as Plant Propagator, Curator of the Larz Anderson Bonsai Collection, Editor of *Arnoldia*, Director of Living Collections and Senior Research Scientist. He was an Associate Professor in Practice in the Landscape Architecture Department at the Harvard Graduate School of Design and later taught in the Urban Planning Department at MIT. His recent work is focused on urban ecology and climate change and resulted in the publication of the widely acclaimed *Wild Urban Plants of the Northeast: A Field Guide* (2nd edition 2020).

Roy Diblik is a recognized perennial plant expert, grower, designer, speaker and author. Combining his 35 years of knowledge growing traditional and Midwest native perennials, he specializes in highly aesthetic, sustainable plant communities for all seasons, while reducing maintenance through design. He believes that gardens should be thoughtful, ecologically directed, emotionally outreaching, and yet very personal.



Mickey Fearn has been a public servant, parks, recreation, and conservation professional for over 50 years. He has served as a Professor of Practice in the North Carolina State University's School of Natural Resources since 2013. From 2009 to 2013 he served as the National Park Service's Deputy Director for Communications and Community Assistance from 2008 until 2013. His responsibilities included Community Engagement and Outreach, Communications, Public Affairs, Strategic Planning, Youth Programs, International Affairs, Partnerships, Legislative and Congressional Affairs, Policy, State and Local Assistance Programs.

// It was truly inspiring. I've been interested in a more ecologically sustainable yard/garden and I am thrilled to have found professionals and resources to help me accomplish this.

-Bonnie W., 2020 Summer Series Attendee

PRESENTER BIOGRAPHIES *continued*

Diana Fernandez, ASLA, PLA is Landscape Architect with Sasaki. Diana partners with architects, planners, urban designers, ecologists and civil engineers on the design of equitable and sustainable places. Her experience spans a broad range of projects from planning to built work. Prior to joining Sasaki, Diana worked as a landscape architect and project designer in Philadelphia where she worked on urban and campus projects in the metro area.



Photo by Matthew Arielly



Carol Gracie is retired from her role at The New York Botanical Garden, where she spent many years leading natural history tours and exploring South American rainforests for plants. She has since returned to her earlier interest in local flora, publishing three books on this topic: *Wildflowers in the Field and Forest: A Field Guide to the Northeastern United States* (2006, co-authored, with Steven Clemants), *Spring Wildflowers of the Northeast: A Natural History* (2012), and *Summer Wildflowers of the Northeast: A Natural History* (2020). Carol's most recent book, a more general book on flowers and related subjects (Princeton, 2021) is titled *Florapedia*.

Eric D. Groft, FASLA is Principal and Vice President at OEHME, VAN SWEDEN | OvS, where he has built an over 35-year career. He is renowned for his diversity in residential, commercial, and institutional work. His canon is marked by a deft sense of regionalism, attention to the vernacular, and work with cultural landscapes. Eric is an alumnus of the University of Virginia, where he earned a Master of Landscape Architecture.

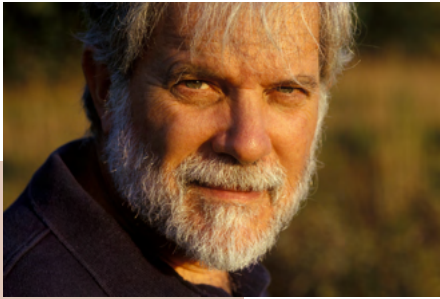


Photo by Larry Weaner

“The expertise, skill in presenting, additional resources and the sheer joy from all of the presenters has been inspiring and immensely helpful.

– MICHELLE S., 2021 WINTER SERIES ATTENDEE

PRESENTER BIOGRAPHIES *continued*



Steven Handel, PhD, is a Distinguished Professor of Ecology at Rutgers University, and formerly Visiting Professor at Harvard University's Graduate School of Design. He studies the restoration ecology of urban habitats and is the Editor of the journal *Ecological Restoration*. He received his BA in biology from Columbia University and a PhD in ecology and evolution from Cornell University.

Dr. James Hitchmough is Professor of Horticultural Ecology in the Department of Landscape Architecture at The University of Sheffield in the UK. His main research interests have revolved around the ecology, design, and management of herbaceous vegetation, leading to the development of a still-active research group in the restoration ecology of Australian native grasslands. James has increasingly reinterpreted ecologically-based herbaceous vegetation in the cultural context of the public greenspace of towns and cities. He received his Bachelor of Science degree in Horticulture and his PhD in 1984 from the University of Bath's School of Biological Sciences.



Wambui Ippolito is an East African Horticulturalist and Landscape Designer based in New York City, and is a graduate of the prestigious New York Botanical Garden's School of Professional Horticulture. She is a design mentor for *Veranda Magazine's* first-ever "Design U Masterclass". Wambui will design an exhibition garden for the Pennsylvania Horticultural Society 2021 Flower Show in Philadelphia. She lives with her family on the borough of Staten Island.

Nancy Lawson founded The Humane Gardener, LLC, to pioneer wildlife-friendly planting strategies. A habitat consultant and national speaker on garden ecology, she is the author of *The Humane Gardener: Nurturing a Backyard Habitat for Wildlife* (2017). Nancy has presented at diverse venues, from national wildlife refuges to local wildflower preserves. Certified as a Chesapeake Bay Landscape Professional and master naturalist, she partners with local environmental organizations, including the Audubon Society of Central Maryland and Howard County Bee City, and has been featured in *The New York Times*, *The Washington Post*, and *The Oprah Magazine*.



PRESENTER BIOGRAPHIES *continued*



Dr. Donald J. Leopold, Distinguished Teaching Professor, earned his PhD in forest ecology from Purdue University in 1984 and joined the Department of Environmental and Forest Biology at SUNY ESF (Syracuse) in 1985 where he teaches subjects including dendrology and wetland ecology. He is co-founder and co-Director of the Restoration Science Center at ESF. Don has published over 70 peer-reviewed papers and seven books including *Trees of New York State* (2020) and *Wildflowers of the Adirondacks* (2020). His research primarily focuses on drivers of diversity and rarity at micro to macro scales; the restoration of unique plant communities on highly degraded sites; and applications of this research to sustainable, urban landscapes and green solutions.

Dr. Steven Moga, Professor of Landscape Studies at Smith College, is an urbanist and city planning historian with research interests in environmental design, cultural landscapes and the power of place. He completed his master's and doctorate in urban planning (University of California, Los Angeles, 1999; MIT, 2010). As a preservation planner, he has consulted on cultural landscape reports, tax credit projects, environmental reviews, historic surveys and municipal plans. In 2013, Steven was awarded a Mellon Foundation Fellowship for research at the New-York Historical Society. His writing has been published in various research publications, and his latest book is entitled *Urban Lowlands: A History of Neighborhoods, Poverty, and Planning* (2020).



Chip Osborne is a professional horticulturist with over forty-five years of experience in the green industry. Formally from the conventional world, he has embraced organic land management practices for the past twenty-five years and works as a consultant converting conventional management practices to organic on a national level. He is a NOFA accredited Organic Land Care Professional, a member of the Board of Directors of Beyond Pesticides, and a twenty-year elected member of the Town of Marblehead MA Recreation and Parks Commission.

PRESENTER BIOGRAPHIES *continued*

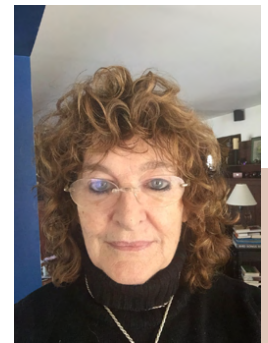
Marc Pastorek is a consultant and landscape designer specializing in restoring Gulf coastal prairies by way of wild-collected seed. Marc has created restoration projects using his own seed mixes and innovative planting strategies. He and his wife Candi have operated their Louisiana-based landscape firm Pastorek Habitats for over 20 years.



Greg Rubin founded California's Own Native Landscape Design, Inc. in 1995, emphasizing a uniquely ecological approach to landscape design. Greg (with Lucy Warren) co-authored two best-selling books from Timber Press: *The California Native Landscape* (2013), and *The Drought Defying California Landscape* (2016). He has made frequent appearances in television & radio, as well as written articles for (or been featured in) numerous publications. In 2018, he was chosen Horticulturist of the Year by the San Diego Horticultural Society.



Leslie Sauer, a founder emeritus of Andropogon Associates, is a pioneer in the field of ecological restoration. She was an adjunct professor at the University of Pennsylvania in Landscape Architecture and served on the Board of Directors of the Society for Ecological Restoration. Her book, *The Once and Future Forest* (Island Press, 1998) is a guidebook for restoring and managing natural landscapes-especially remnant deciduous forests.



Sarah Schindler is the Maxine Kurtz Faculty Research Scholar and Professor of Law at the University of Denver Sturm College of Law. She teaches and writes about property, land use, and local government law. For the first twelve years of her academic career, Professor Schindler taught at the University of Maine School of Law, where she was most recently the Edward S. Godfrey Professor of Law and Associate Dean for Research. Prior to entering academia, Professor Schindler clerked for Judge Will Garwood of the Fifth Circuit Court of Appeals in Austin, Texas and practiced in the area of land use and environmental law at Morrison and Foerster in San Francisco.



Photo by Nadra Photography

PRESENTER BIOGRAPHIES *continued*

Rod Simmons, Natural Resource Manager and Plant Ecologist for the City of Alexandria, Virginia, has worked extensively in the fields of natural resource management and ecological restoration for nearly 30 years. Rod is a member of the Virginia Botanical Associates, and works closely with the Virginia and Maryland natural heritage programs. A member and past president of the Botanical Society of Washington and past president of the Maryland Native Plant Society, Rod serves on the board of the Virginia Native Plant Society and is a regular field trip leader for all of these organizations. He is a frequent lecturer on native plants, natural communities, ecological restoration, and other related topics.



Photo by Anita McKernan

One of North America's leading landscape designers, **W. Gary Smith** specializes in the design and planning of botanical gardens that weave together ecological and cultural themes. In recent years he has focused his creative energies on works of environmental art. The recipient of many national awards, his projects include the Santa Fe Botanical Garden, the Luci and Ian Family Garden at the Lady Bird Johnson Wildflower Center, the Southern Highlands Reserve in North Carolina, and Peirce's Woods at Longwood Gardens. His book, *From Art to Landscape: Unleashing Creativity in Garden Design* (2010), received the Garden Book Award from the American Horticultural Society.

Tim Toland, RLA, LEED AP, has been senior associate at Michael Van Valkenburgh Associates Inc. since 2018 and has also practiced in New York, Virginia, Ohio, and North Carolina. From 2005 to 2018, he was an associate professor at SUNY College of Environmental Science and Forestry (SUNY-ESF), teaching courses including plant identification, planting design, construction materials, and construction documents. Tim earned his Associates in Landscape Development and Bachelor of Technology degrees from SUNY Cobleskill, and a Master of Landscape Architecture degree from SUNY-ESF. With this background Tim approaches landscape architecture with a focus on the implementation of projects, merging the technical with the artistic to create enduring places.



I was **WOWED!**

Emma V., 2020 Summer Series Attendee

PRESENTER BIOGRAPHIES *continued*



Photo by Linda Auld

Dr. Malcolm Vidrine is a retired Professor of Biology from the Louisiana State University Eunice in Eunice, Louisiana. He is a founding member of the Cajun Prairie Habitat Preservation Society. He has helped to restore Cajun Prairie and presented several papers about this prairie at several North American Prairie Conferences. He has also authored/coauthored 10 books/chapters on the Cajun Prairie, and with the help of his wife, he has created his home landscape gardens, The Cajun Prairie Gardens.

Larry Weaner, FALPD, president and founder of Larry Weaner Landscape Associates, established New Directions in the American Landscape in 1990. He is nationally recognized for combining expertise in horticulture, landscape design, and ecological restoration. His design and restoration work spans more than twenty US states and the UK, and has been profiled in national publications, including *The New York Times*, *The Wall Street Journal*, *Landscape Architecture Magazine*, *Garden Design*, *American Gardener*, *Wildflower Magazine*, and ASLA's *The Dirt* blog. His book *Garden Revolution: How Our Landscapes Can Be a Source of Environmental Change* (2016) received an American Horticultural Society Book Award in 2017.



Photo by Rob Cardillo

//
This webinar was well worth my time, evidenced by 2+ pages of notes!

-Kristine B., 2020 Summer Series Attendee



Photo by Larry Weaner Landscape Associates

PRESENTER BIOGRAPHIES *continued*



Mark Weaner is Lead Technician and Project Manager at Photolab in Berkeley, California. He founded, owned, and managed Bay Custom Lab in San Francisco, CA from 1982 to 1992, allowing him to experience the service, employee, and retail environments. These elements together have provided Mark with a panoramic perspective and understanding of how the photographer can approach - and how the viewer relates to - the still image. He attended San Francisco Art Institute in 1977 and Tyler School of Art at Temple University in 1981.

Tom Wessels is professor emeritus at Antioch University where he founded the masters degree program in Conservation Biology. As a terrestrial ecologist he has interests in forest, desert, alpine, and arctic ecosystems plus evolutionary ecology and sustainability. He is author of numerous books including *Reading the Forested Landscape* (1997) and *The Myth of Progress* (2006). His latest book is *New England's Roadside Ecology: Explore 30 of the Region's Unique Natural Areas* (2021).



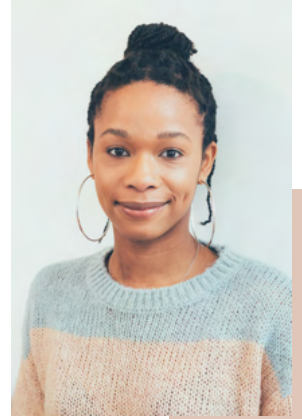
Barbara Wilks, ASLA, FAIA, established an award-winning career instilling nature into some of the most challenging urban sites around the world. She began her professional vocation as an architect in Baltimore, but soon realized that her interests in public space aligned more with landscape architecture. After earning a MLA at the midpoint in her career, she founded W Architecture and Landscape Architecture in New York City in 1999 to focus her planning and design expertise on realigning nature and the city, thereby creating more sustainable environments for future generations.



Photo by Larry Weaner

PRESENTER BIOGRAPHIES *continued*

Based in Detroit, **Ujiji Davis Williams** is a practicing landscape architect and urban planner who focuses on landscape and urban design, master planning and strategic implementation. She is currently an Associate at SmithGroup, and an Adjunct Professor at the University of Detroit-Mercy School of Architecture. In 2019, she won the ASLA Bradford Williams Medal of Excellence for her critical essay, "The Bottom: The Emergence and Erasure of Black American Urban Landscapes," and in 2020 she received the Michigan ASLA Emerging Professionals Award. Originally from Brooklyn, Ujiji holds a Bachelor of Science in Landscape Architecture from Cornell University, and a Master of Urban Planning from the University of Michigan.



Over the past two decades of practice, Landscape Architect **Thomas Woltz** has forged a body of work that integrates the beauty and function of built forms with an understanding of complex biological systems and restoration ecology. As principal of Nelson Byrd Woltz Landscape Architects, Woltz has infused narratives of the land into the places where people live, work, and play, inspiring connections to the natural world and engendering environmental stewardship.

Questions? Email info@ndal.org

Or call NDAL Executive Director
Sara Weaner at **510-518-0430**

REGISTER HERE